

FTTX FIBER OPTIC CABINET PACKAGE, TYPE 4X


Battery Cabinet



19- or 23-inch rack mounting including cabinet entry boots



Door with foam-in-place gasketing and optional insulation



Door Switch



Ground Bus Bar



Handle

INDUSTRY STANDARDS

| |
|---|
| UL 508A Listed; Type 4, 4X, 12; File No. E61997 |
|---|

CSA: Type 4, 4X, 12

NEMA/EEMAC Type 4, 4X, 12

EC60529, IP66

Designed to meet Telcordia NEBS GR-487, GR-63 and IEC 48D

EIA 310-D with 19-in. spacing for rack equipment

Cabinet is RoHS compliant

NEBS is a trademark of Telcordia
APPLICATION

Pad-mounted FTTX welded aluminum enclosures provide long-lasting protection and manage fiber optic cable for broadband delivery in outdoor applications. Provided with or without back-up battery compartment.

FEATURES

- Standard pitched roof promotes water runoff
- Available with either single- or dual-access doors on front and rear for convenient access
- Available with or without battery compartment
- 3-point latching mechanisms and padlocking handles on doors provide security
- Seamless foam-in-place gasket seals doors against moisture and dust
- Wind latch mechanisms on doors control door when open for equipment maintenance
- Removable lifting lugs (2) for easy installation
- Rack angles adjustable for 19-in. or 23-in. spacing without modifications
- Use cage nuts to mount equipment

- Cabinet top insulation helps prevent the formation of condensation and reduces solar gain inside cabinet. Cabinet side insulation is optional.
- Base of cabinet has a 5.00-in. (127-mm) high aluminum mounting plinth to allow for cable alignment
- Three pyramidal boots provided at base of cabinet for sealing various sizes of cables
- All fasteners are stainless steel to maintain professional appearance in severe outdoor climate conditions
- Grounding buss bar provided

SPECIFICATIONS

- Manufactured from Type 5052-H32 .125 in.-thick aluminum
- Seams continuously welded and ground smooth
- Heavy gauge continuous hinge

FINISH

RAL 7035 light textured low-gloss polyester powder paint over pretreated surfaces. Custom finishes available please contact your local Hoffman sales office.

ACCESSORIES

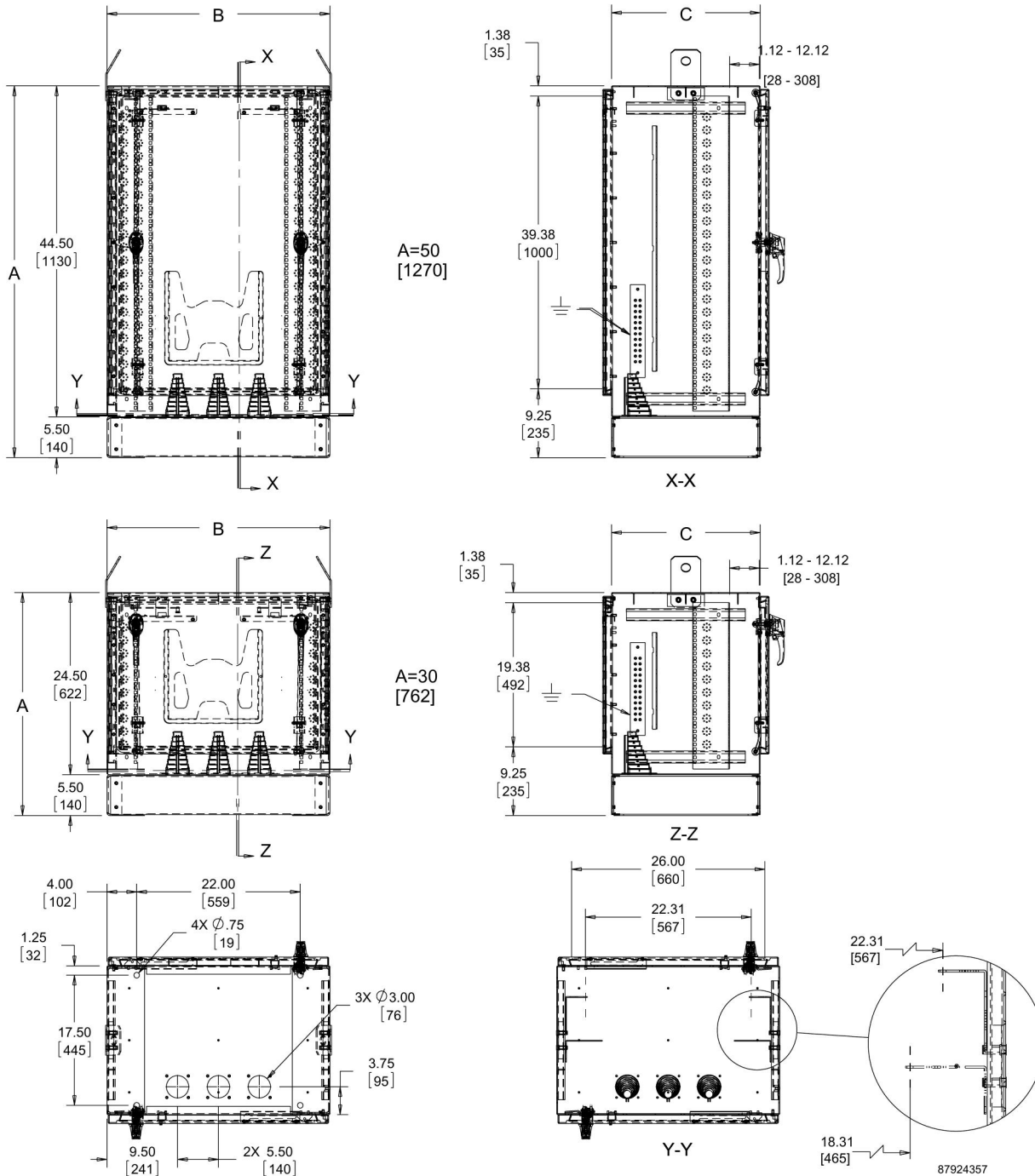
Fiber Management Spool
 Compact Cooling Fans
 Temperature Control Switches
 Light Package
 Screw Packages
 Fiber Optic Cabinet Pole-Mount Kit
 Compact and Mid-Size Heat Exchangers
 Type 3R, 12, 4 T4 Line Indoor/Outdoor Air Conditioners
 Electric Heaters

BULLETIN: DTX

Standard Product **FTTX Without Battery Compartment**

| Catalog Number | AxBxC in. | AxBxC mm | Rack Units | Description |
|----------------|-----------------------|-------------------|------------|---------------|
| T303020FTTX | 30.00 x 30.00 x 20.00 | 762 x 762 x 508 | 10 | Single-Access |
| T503020FTTX | 50.00 x 30.00 x 20.00 | 1270 x 762 x 508 | 22 | Single-Access |
| T303020FTTXDA | 30.00 x 30.00 x 20.00 | 762 x 762 x 508 | 10 | Dual-Access |
| T503020FTTXDA | 50.00 x 30.00 x 20.00 | 1270 x 762 x 508 | 22 | Dual-Access |
| T303044FTTXDA | 30.00 x 30.00 x 44.00 | 762 x 762 x 1118 | 10 | Dual-Access |
| T503044FTTXDA | 50.00 x 30.00 x 44.00 | 1270 x 762 x 1118 | 22 | Dual-Access |
| T843044FTTXDA | 84.00 x 30.00 x 44.00 | 2134 x 762 x 1118 | 43 | Dual-Access |

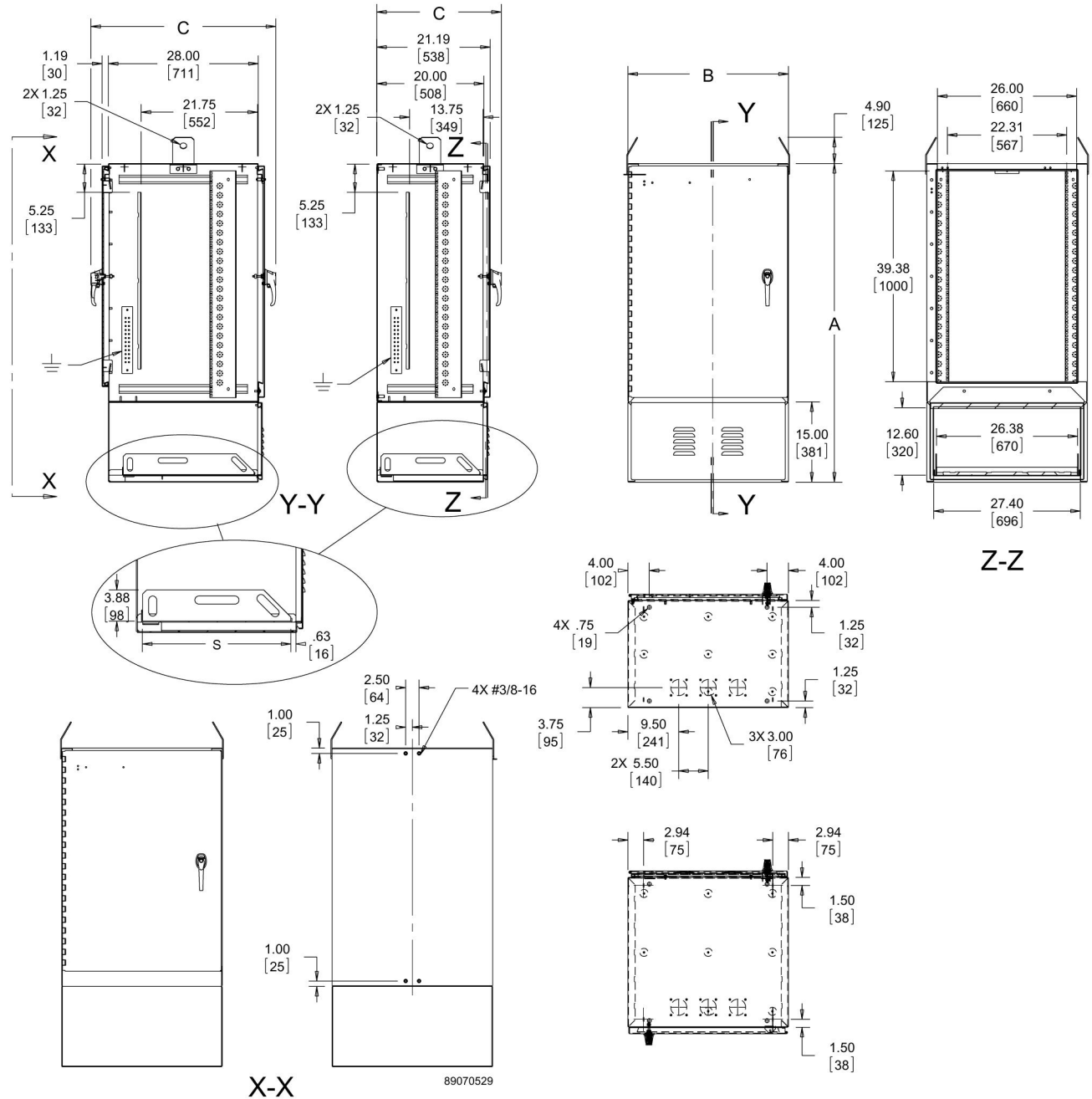
FTTX Fiber Optic Cabinet Without Battery Compartment



Standard Product FTTX With Battery Compartment

| Catalog Number | AxBxC in. | AxBxC mm | Rack Units | Description | S (in.) | S (mm) |
|----------------|-----------------------|-------------------|------------|---------------|---------|--------|
| T503020FTTXB | 59.49 x 30.00 x 23.27 | 1511 x 762 x 591 | 22 | Single-Access | 18.75 | 476 |
| T503028FTTXDAB | 59.49 x 30.00 x 34.53 | 1511 x 762 x 877 | 22 | Dual-Access | 24.75 | 629 |
| T503044FTTXDAB | 59.49 x 30.00 x 50.53 | 1511 x 762 x 1283 | 22 | Dual-Access | 40.75 | 1035 |
| T843044FTTXDAB | 93.49 x 30.00 x 50.53 | 2375 x 762 x 1284 | 43 | Dual-Access | 40.75 | 1035 |

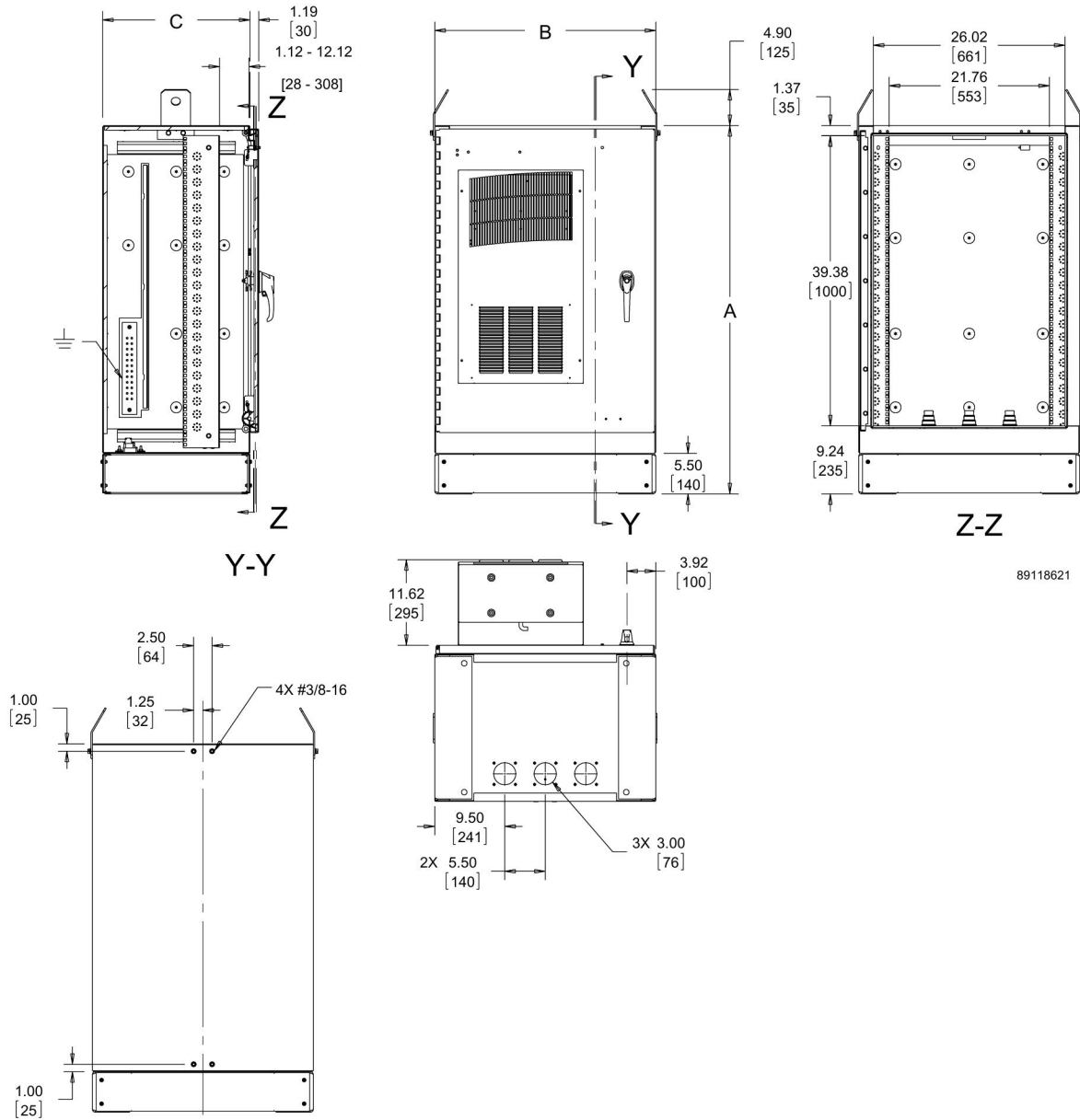
FTTX Fiber Optic Cabinet With Battery Compartment



Standard Product With AC, Without Battery Compartment

| Catalog Number | AxBxC in. | AxBxC mm | Rack Units | Description | AC Model |
|-----------------|-----------------------|-------------------|------------|---------------|-------------|
| T503020FTTXSA | 50.00 x 30.00 x 20.00 | 1270 x 762 x 508 | 22 | Single-Access | T290426G161 |
| T503044FTTXDASA | 50.00 x 30.00 x 44.00 | 1270 x 762 x 1118 | 22 | Dual-Access | T290426G161 |
| T843044FTTXDASA | 84.00 x 30.00 x 44.00 | 2134 x 762 x 1118 | 43 | Dual-Access | T430626G159 |

FTTX Fiber Optic Cabinet Without Battery Compartment, With AC



89118621

FIBER MANAGEMENT SPOOL

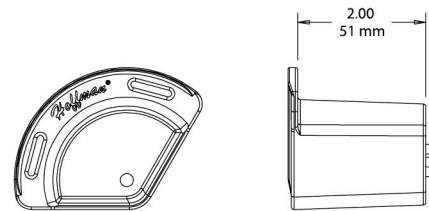


Fiber Management Spools mount inside the cabinet and help maintain proper bends when routing cable. Molded of black plastic. Includes thread-forming M5 mounting screws. Slots provided on flange for VELCRO® cable wrap.

VELCRO is a trademark of Velcro Industries B.V.

BULLETIN: DTX

| Catalog Number | Radius (in.) | Radius (mm) | Pkg. Qty. |
|----------------|--------------|-------------|-----------|
| TOPTKSPL | 1.18 | 30 | 4 |



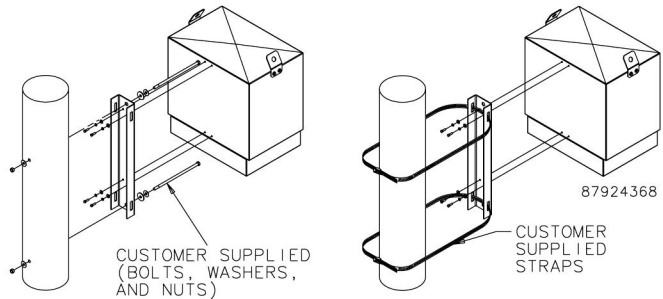
87951339

FIBER OPTIC CABINET POLE-MOUNT KIT

The Pole-Mount Kit installs on the rear of the single-access cabinets using the hardware provided. No drilling or tapping of the cabinet is required. Installation instructions are provided for mounting to various types of poles.

BULLETIN: DTX

| Catalog Number | Kit Includes | Use With |
|----------------|---|-------------|
| T11FTTXXPMK | Channel and hardware for attaching to cabinet | 10U Cabinet |
| T23FTTXXPMK | Channel and hardware for attaching to cabinet | 22U Cabinet |



87924368

INSTALLATION ON WOOD POLE

INSTALLATION ON CONCRETE OR STEEL POLE

CAGE NUT PACKAGE



Cage Nut Packages are for use with square-hole rack angles. Cage nuts are plated steel.

BULLETIN: DACCY

| Catalog Number | Color | Description | Pkg. Qty. |
|----------------|--------|----------------|-----------|
| PM5CN | Silver | M5 cage nut | 20 |
| PM6CN | Silver | M6 cage nut | 20 |
| PM6CN250 | Silver | M6 cage nut | 250 |
| P1032CN | Silver | 10-32 cage nut | 20 |
| P1032CN250 | Silver | 10-32 cage nut | 250 |
| P1224CN | Silver | 12-24 cage nut | 20 |
| P1224CN250 | Silver | 12-24 cage nut | 250 |

SCREW PACKAGE



Screws attach rack panels and rack-mounted equipment to rack-mounting angles.

BULLETIN: A80, DACCY

| Catalog Number | Color | Description | Pkg. Qty. |
|----------------|--------|--|-----------|
| ES1224 | Silver | 12-24 x 5/8 in. combo head | 20 |
| ES1224250 | Silver | 12-24 x 5/8 in. combo head | 250 |
| ES1224B | Black | 12-24 x 5/8 in. combo head | 20 |
| ES1224B250 | Black | 12-24 x 5/8 in. combo head | 250 |
| ASM5 | Silver | M5 x 20 mm Combo Head | 20 |
| ASM6 | Silver | M6 x 16 mm combo head | 20 |
| ASM5T | Silver | M5 x 12 mm thread-forming Phillips hex head screws | 20 |
| ASM6250 | Silver | M6 x 16 mm combo head | 250 |
| AS1032 | Silver | 10-32 x 5/8 in. combo head | 20 |
| AS1032250 | Silver | 10-32 x 5/8 in. combo head | 250 |
| AS1032B | Black | 10-32 x 5/8 in. combo head | 20 |

Use ASM5T on PROLINE frame or Net Series extruded holes.

TOP SOLAR SHIELD FOR CABINET

The Top Solar Shield provides reduction to solar load by providing air insulation to the top of the cabinet. Shield top surface is angled to direct rain water off to the side of the cabinet. The solar shield bolts on to cabinet for easy assembly. Made of 0.80 aluminum with cabinet matching RAL 7035 finish.

BULLETIN: DTX

| Catalog Number | AxBxC in. | AxBxC mm | Use with B x C |
|----------------|----------------------|----------------|----------------|
| TSS3020 | 1.73 x 30.20 x 21.26 | 44 x 767 x 540 | Single Access |
| TSS3020D | 1.73 x 30.20 x 22.36 | 44 x 767 x 568 | Dual Access |
| TSS3028D | 1.73 x 30.20 x 30.39 | 44 x 767 x 772 | Dual Access |

